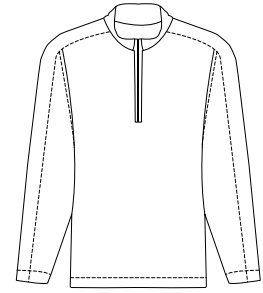
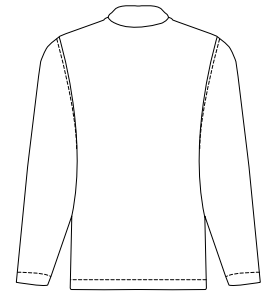


Sphere Dry Cover Up

NIKE GOLF 



Front



Back



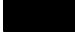
244610

Nike has engineered a cover-up that effectively wicks sweat while keeping you warm. With a 1/4 zip that lets you breathe and move, this cover-up has distinctive contrast stitching and an open hem. Constructed with Nike Sphere Dry technology to wick moisture to keep you comfortable. The design includes a self-fabric collar and open cuffs. The contrast Swoosh design trademark is embroidered on the lower left sleeve. In 100% polyester.

Care Instructions:
Machine wash cold inside out with like colors. Do not use softeners. Do not use bleach. Tumble dry low. Do not use iron. Do not dry clean.

Finished Measurements in Inches								
Size	XS	S	M	L	XL	2XL	3XL	4XL
Chest	20	21.5	23	24.5	26	27.5	29	30.5
Sweep	18.5	20	21.5	23	24.5	26	27.5	29
Length	26	27	28	29	30	31	32	33
Sleeve	33.5	34.5	35.5	36.5	37.5	38.5	39.5	40.5
Neck	9.125	9.5	9.875	10.25	10.625	11	11.375	11.75

Chest width measured 1" below arm hole. Shoulder measured across back at shldr points. Body length measured from back neck seam to hem. Sleeve length measured from center back neck seam to hem. Neck opening measured from center back neck to bottom of placket.

Colors	
	Stone Blue/Birch
	Olive/Khaki
	Black/Anthracite

Please Note:
Colors shown are approximate and for reference only. For closest match see PMS colors, or for exact match, returnable samples and grmmed samples are available.

Color Chart			
Colors	Stone Blue/Birch	Olive/Khaki	Black/Anthracite
Textile PMS	No Match	No Match	No Match
General PMS	541C	547C	5463C